

X-ray flaring from the young stars in Cygnus OB2 [★]

J. F. Albacete Colombo^{1,2}, M. Caramazza¹, E. Flaccomio¹, G. Micela¹, and S. Sciortino¹

¹ INAF – Osservatorio Astronomico di Palermo, Piazza del Parlamento 1, 90134 Palermo, Italy
e-mail: facundo@astropa.unipa.it

² Centro Universitario Regional Zona Atlantica (CURZA) – Univ. nacional del COMAHUE, Monsenor Esandi y Ayacucho (8500), Viedma (Rio Negro), Argentina

Received 12 June 2007 / Accepted 2 August 2007

ABSTRACT

Aims. We characterize individual and ensemble properties of X-ray flares from stars in the Cygnus OB2 and ONC star-forming regions. **Methods.** We analyzed X-ray lightcurves of 1003 Cygnus OB2 sources observed with Chandra for 100 ks and of 1616 ONC sources detected in the “Chandra Orion Ultra-deep Project” 850 ks observation. We employed a binning-free maximum likelihood method to segment the light-curves into intervals of constant signal and identified flares on the basis of both the amplitude and the time-derivative of the source luminosity. We then derived and compared the flare frequency and energy distribution of Cygnus OB2 and ONC sources. The effect of the length of the observation on these results was investigated by repeating the statistical analysis on five 100 ks-long segments extracted from the ONC data.

Results. We detected 147 and 954 flares from the Cygnus OB2 and ONC sources, respectively. The flares in Cygnus OB2 have decay times ranging from ≤ 0.5 to about 10 h. The flare energy distributions of all considered flare samples are described at high energies well by a power law with index $\alpha = -(2.1 \pm 0.1)$. At low energies, the distributions flatten, probably because of detection incompleteness. We derived average flare frequencies as a function of flare energy. The flare frequency is seen to depend on the source’s intrinsic X-ray luminosity, but its determination is affected by the length of the observation. The slope of the high-energy tail of the energy distribution is, however, affected little. A comparison of Cygnus OB2 and ONC sources, accounting for observational biases, shows that the two populations, known to have similar X-ray emission levels, have very similar flare activity.

Conclusions. Studies of flare activity are only comparable if performed consistently and taking the observation length into account. Flaring activity does not vary appreciably between the age of the ONC (~ 1 Myr) and that of Cygnus OB2 (~ 2 Myr). The slope of the distribution of flare energies is consistent with the micro-flare explanation of the coronal heating.

Key words. stars: activity – stars: corona – stars: low-mass, brown dwarfs – X-rays: stars

1. Introduction

Pre-main sequence (PMS) stars have high levels of X-ray activity with non-flaring X-ray luminosities (L_x) up to 10^{31} erg/s, about two magnitude order of above those observed in most main sequence (MS) stars (Preibisch et al. 2005). The X-ray activity in the PMS phase is commonly attributed to a “scaled up” solar-like corona formed by active regions. For non-accreting PMS stars, i.e. weak T Tauri stars (WTTSSs), the fraction of energy emitted in the X-rays energies with respect to the bolometric luminosity (L_{bol}) is close to the saturation level, $\sim 10^{-3}$, observed for rapidly rotating MS stars, supporting the idea of a common physical mechanism acting both in the MS and the PMS phases. A more complex scenario is observed for PMS stars that are still undergoing mass accretion via magnetically funneled inflows (classical T Tauri stars – CTTSSs): soft X-rays are also produced here in accretion shocks (e.g. Argiroffi et al. 2007), but coronal activity appears to be somewhat reduced with respect to WTTSSs (Flaccomio et al. 2003; Preibisch et al. 2005). Regardless of their accretion properties, all PMS stars show the high-amplitude rapid variability associated with violent magnetic reconnection flares (e.g. Feigelson & Montmerle 1999).

X-ray variability over a wide range of time scales and scenarios is common to all magnetically active stars (e.g. Favata & Micela 2003; Güdel 2004; Stassun et al. 2006). On long time scales, this includes rotational modulation of active regions, their emergence and evolution, and magnetic cycles (e.g. Marino et al. 2003; Flaccomio et al. 2005). Most of the observed variations, however, have short time-scales (\sim hours) and can be attributed to the small-scale flares triggered by magnetic reconnection events. Various authors have proposed that the overall X-ray emission observed in magnetically active stars is the result of a large number of overlapping small flares (e.g. Drake et al. 2000; Caramazza et al. 2007), in analogy with the micro-flare heating mechanism proposed for the solar corona (Hudson 1991). The energy distribution of these events is supposedly described well by a power law, such that the large majority of flares release only small amounts of energy, so that we only detect their integrated and time-averaged X-ray emission (Audard et al. 2000; Güdel et al. 2003).

In the past, statistical studies of X-ray variability in low-mass stars were hindered by the poor temporal coverage of *EINSTEIN* and *ROSAT* observations, which were often short and very fragmented (e.g. Fuhrmeister & Schmitt 2003), and also by the limited spectral coverage of these telescopes. They were essentially limited to soft energies, while flares are characterized by harder emission. However, since the launch of the

[★] Full Table 1 is only available in electronic form at <http://www.aanda.org>

XMM-Newton and *Chandra* satellites, these limitations have been eased. In fact, two major projects relevant to the study of PMS X-ray activity have been performed recently with the *Chandra* and *XMM-Newton* telescopes, targeting two galactic SFRs:

i) The *Chandra Orion Ultra-deep Project* (COUP) consisting in an ~ 850 ks long (~ 10 days) *Chandra* observation of the Orion Nebula cluster (ONC), performed over a time span of 13 days. With a total of 1616 detected X-ray sources, the ONC is so far the best-studied SFR in X-rays. The COUP observation has been used for a number of variability studies, among which: flare statistics on “young suns” (Wolk et al. 2005), physical modeling of intense X-ray flares (Favata et al. 2005), rotational modulation (Flaccomio et al. 2005), X-ray variability of hot stars Stelzer et al. (2005), and flaring from very low mass ($0.1\text{--}0.3 M_{\odot}$) stars (Caramazza et al. 2007).

ii) The *XMM-Newton Extended Survey of Taurus Molecular Clouds* (XEST). In contrast to the COUP, XEST consists of several different pointings with roughly uniform continuous exposures of $\sim 30\text{--}40$ ks (Güdel et al. 2007). An X-ray variability study has recently been presented by Stelzer et al. (2007), focusing on the statistics of X-ray flaring sources in the context of the coronal heating processes.

Cygnus OB2 is a massive ~ 2 Myr old star-forming region whose stellar population has recently been studied in the X-rays by Albacete Colombo et al. (2007). This work, based on a 100 ks long *Chandra* observation, focused essentially on the detection of X-ray point sources, finding 1003 from the analysis of their X-ray spectra and on their optical and near-IR characterization. Here we present an X-ray variability study of the young low-mass stars of the Cygnus OB2 region, aimed at giving a statistical characterization of variability and, ultimately, understanding its physical origin. Through a comparison with other regions, this study will also allow us to understand whether the X-ray variability properties depend on the different cluster environment and physical characteristics. Unfortunately, statistical results obtained for one region often cannot be directly compared with those obtained for another SFR, because of the different sensitivity limits and temporal coverages of the respective X-ray observations. However, using the long COUP observation for the ONC, here re-analyzed consistently with the Cygnus OB2 data, we assess the effect of the observation length on our results and are able to present a robust comparison of flare variability in the two regions.

In Sect. 2 we describe the methods used to detect and characterize variability and, in particular, our operative definition of flares. In Sect. 3 we present the observed flare properties: decay times, energy distribution and frequency. In Sect. 4 we extend our study to the COUP data, considering both the entire 850 ks observation and 5 distinct 100 ks segments. Finally, we discuss our results in Sect. 5 and draw our conclusions.

2. Variability analysis

The analysis presented in this paper was performed starting from event lists of the Cygnus OB2 and ONC *Chandra* sources. These were appropriately extracted in the $0.5\text{--}8.0$ keV energy range by Albacete Colombo et al. (2007) and Getman et al. (2005) for the Cygnus OB2 and ONC observations, respectively, in both cases using the ACIS-EXTRACT package (Broos et al. 2002). The analysis of the COUP data was performed in two ways: *i)* considering the entire 850 ks COUP observation, *ii)* by selecting in the observations 5 different 100 ks segments of continuous observation starting at 0, 180, 400, 650, and 850 ks from

the beginning of the observation¹. This approach proved useful for understanding the biases due to differences in the observation lengths. The 850 ks COUP observation, for example, permits detection of extremely long duration (~ 400 ks) flares (Favata et al. 2005), while in a 100 ks observation like the one available for Cygnus OB2, we can only detect a fraction of the flares longer than $30\text{--}100$ ks and completely miss those with exponential decay times longer than ~ 100 ks. This results in a bias against the observation of energetic flares.

We initially searched the time series of each Cygnus OB2 star for variability using the one-sided Kolmogorov-Smirnov (KS) test (Press et al. 1992). This test compares the distribution of photon arrival times with what is expected for a constant source and gives the confidence, P_{KS} , with which the hypothesis that the source is constant can be rejected. Sources with $P_{KS} \geq 99.9\%$ have been considered as definitively variable, while those with $99.0\% \leq P_{KS} \leq 99.9\%$ are considered as probably variable. Sources with $P_{KS} < 99.0\%$ are not considered significantly variable. In as Cygnus OB2 we found 135 sources out of a total of 1003 sources with $P_{KS} > 99\%$, of which 86 have $P_{KS} \geq 99.9\%$ (Albacete Colombo et al. 2007). In the ONC the figures for the entire COUP observations (1616 detected sources) are 977 and 886 (Getman et al. 2005), while for each of the five 100 ks segments we find, on average, 358 and 264 sources with $P_{KS} > 99\%$ and $P_{KS} > 99.9\%$, respectively. Last two figures clearly show how the number of sources for which the KS-test detects variability in a given relatively short (e.g. 100 ks) observation is a lower limit to the total number of variable sources in the region. This is essentially due to the fact that most of the observed variability is in the form of flares, i.e. events that are shorter than our observation and with duty-cycles that are instead considerably longer (Wolk et al. 2005) than 100 ks. Moreover, small flares and/or other low-level variability may remain undetected because the sensitivity of the KS tests critically depends on the source’s photon statistics.

We intend to specifically study flare variability here. In the next section we therefore briefly describe statistical tools that, in addition to indicating variability, provide an objective description of the time behavior of the X-ray emission. This, in conjunction with an operative definition based on our a priori idea of flare as an impulsive event, allows their efficient and, most importantly, unbiased detection in our observed lightcurves.

2.1. Maximum likelihood block analysis

We make use of a maximum likelihood algorithm that, under the assumption of Poisson noise, splits a light curve into periods of “constant” signal, referred to as *blocks*. In contrast to more conventional approaches, this method works directly on the sequence of photon arrival times and does not require binning. The maximum likelihood block (MLB) algorithm is described by Wolk et al. (2005). It has two free parameters: the minimum number of counts per block (N_{\min}) and the confidence level (CL) used in detecting variability. In the analysis of the 850 ks COUP data, Wolk et al. (2005) use the MLB algorithm with $N_{\min} = 20$, because of the high photon statistic of solar-mass COUP sources. Unfortunately, our Cygnus OB2 observation is 8.5 times shorter than that of COUP, and the distance to the region is ~ 4 times greater than for the ONC. Most of the Cygnus OB2 sources have less than 40 photons, compelling us to adopt a different N_{\min} for the analysis. A careful comparison showed that, for sources

¹ Julian times (UT): 2 452 648.41, 2 452 650.58, 2 452 653.03, 2 452 655.92, and 2 452 658.27.

with more than 40 detected photons, variability is detected consistently using the MLB algorithm with both $N_{\min} = 1$ (MLB 1) and $N_{\min} = 20$ (MLB 20). In sources with lower statistics, however, detection of variability is hampered by MLB 20 because more than 40 photons are needed to define two different blocks. Thus, in practice, the MLB 1 algorithm is more sensitive to small flares and is just as effective as MLB 20 for more energetic ones.

Following Wolk et al. (2005), we classify blocks into three different groups according to their emission level: *i*) blocks compatible with the *characteristic count rate* (R_{char}), defined as the most frequent count rate exhibited by the source; *ii*) *elevated* blocks, during which the flux is above the R_{char} but usually not associated with impulsive events; *iii*) *very elevated* blocks, marked by significantly elevated flux levels, often associated with impulsive events. We also make use of a measure of the time variation in the count rate, i.e. the *derivative*, here defined as the ratio of the difference between the count rates of two successive blocks ($\Delta R = R_1 - R_2$) and the minimum of the temporal lengths of the two blocks, $\min(\Delta t_1, \Delta t_2)$:

$$\frac{dR}{dt} \equiv \frac{|R_1 - R_2|}{\min(\Delta t_1, \Delta t_2)}. \quad (1)$$

We then define a flare as a group of non-characteristic blocks, beginning with a block for which the ratio between the derivative and characteristic level is above a threshold, here set to $10^{-4.2} \text{ s}^{-1}$:

$$\frac{dR}{dt} \cdot \frac{1}{R_{\text{char}}} > D_{\text{th}} \equiv 10^{-4.2}. \quad (2)$$

The duration of the flare, t_{flr} , is defined as the total duration of consecutive *elevated* and *very elevated* blocks belonging to the flare. Note that the adopted value of D_{th} is slightly lower than the one used by both Wolk et al. (2005) and Caramazza et al. (2007), i.e. $10^{-4.0} \text{ s}^{-1}$. The new, slightly lower threshold ensures the detection of 13 small but evident flares in the Cygnus OB2 data that would otherwise remain undetected. Our block classification scheme is illustrated in Fig. 1 for a Cygnus OB2 source with an evident flare. The top panel shows the light curve, both with fixed binning and in the MLB representation, while the lower one shows the time derivative at the interface between blocks.

All the results presented throughout this paper are for $\text{CL} = 99.9\%$, $N_{\min} = 1$, and $D_{\text{th}} = 10^{-4.2}$.

3. Flare properties of Cygnus OB2 sources

We applied the MLB algorithm and our operative definition of flare to the 1003 X-ray sources in the Cygnus OB2 region. We detected a total of 147 flares occurring in 143 X-ray sources. This means that about 14.7% of the sources appear to flare during the 100 ks *Chandra* observation. We found that 74 of the flaring sources are also definitively variable according to the KS-test ($P_{\text{KS}} \geq 99.9\%$), while an other 25 have $99\% < P_{\text{KS}} < 99.9\%$. For the 48 remaining sources, $P_{\text{KS}} \leq 99\%$. Most of these sources (32/48 $\sim 67\%$) have less than 40 photons. Given that the confidence level used for the MLB algorithm was 99.9%, this seems to be more efficient than the KS-test in detecting variability, especially in the low-photon statistical regime.

In order to estimate the energy of each flare, E_{flr} , we multiply the number of flare photons, $N_{\text{ph-flr}} (= \sum (R - R_{\text{char}}) \Delta T)$, by a counts-to-energy conversion factor, CF . This is computed from the total energy released by the source during the observation,

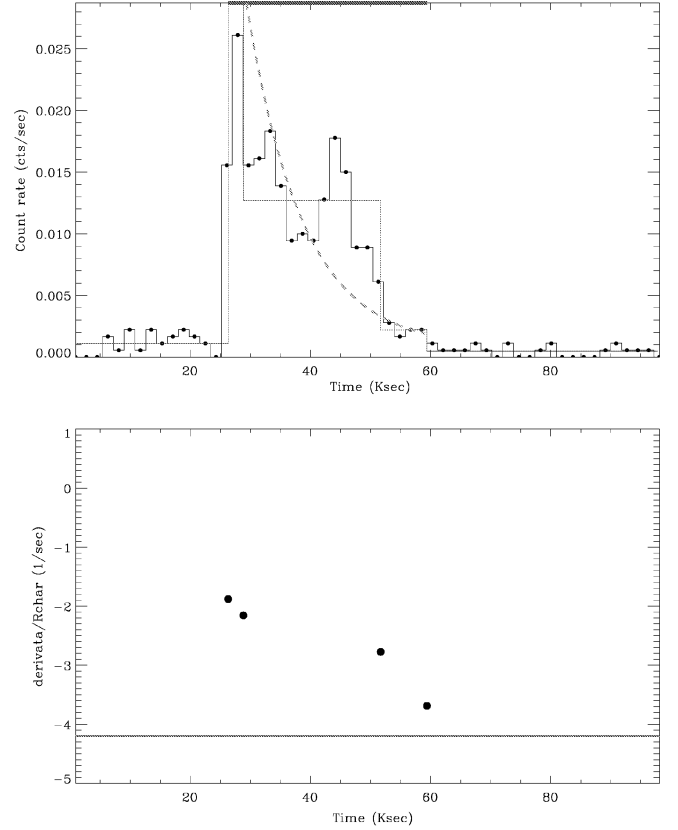


Fig. 1. *Top:* light-curve of a flaring Cygnus OB2 X-ray source, #600 in the list of Albacete Colombo et al. (2007). The histogram shows the light-curve binned in 1800 sec bins. The dotted-line shows the blocks as computed with the MLB algorithm. The first and last blocks are compatible with the characteristic level; the second is classified as “very elevated”; the third and fourth as “elevated” (see text). The blocks identified as belonging to the flare are indicated by a thick solid segment at the top. The dashed line indicates an exponential fit of decay phase. *Bottom:* ratio between the derivative of the count rate and the characteristic level $\frac{dR}{dt} \cdot \frac{1}{R_{\text{char}}}$, calculated at the boundaries of each block. The solid line indicates the threshold ($10^{-4.2}$) used for the detection of flares. Note: The observed sequential second flare is an example of the sustained heating and thermodynamics cooling processes competing simultaneously (e.g. Favata & Micela 2003). This results in longer decay times. MLB compute these cases as single flares.

i.e. the mean L_x times the exposure time, divided by the number of detected source photons, $N_{\text{ph-src}}$:

$$E_{\text{flr}} = \frac{N_{\text{ph-flr}}}{N_{\text{ph-src}}} \int_0^{T_{\text{exp}}} L_x(t) dt = \frac{\overline{L_x} T_{\text{exp}}}{N_{\text{ph-src}}} N_{\text{ph-flr}} = CF \cdot N_{\text{ph-flr}}. \quad (3)$$

For Cygnus OB2 sources $\overline{L_x}$ was computed by Albacete Colombo et al. (2007) using a single count rate for the flux conversion factor. For ONC, although X-ray luminosities from X-ray spectral fits for individual sources are available (Getman et al. 2005), we derived new L_x values, for consistency, using the same approach as was used for Cygnus OB2. Thus E_{flr} was obtained in the two cases by multiplying $N_{\text{ph-flr}}$ by the relative counts-to-energy CF: $7.52 \times 10^{32} \text{ erg/ph}$ for the ONC and $7.92 \times 10^{33} \text{ erg/ph}$ for Cygnus OB2.

We thus ignored both the source-to-source and the flare-to-flare variability in X-ray spectra. Given the low photon statistic of the sources and flares, in particular of those in Cygnus OB2, it is indeed not possible to derive source-specific and

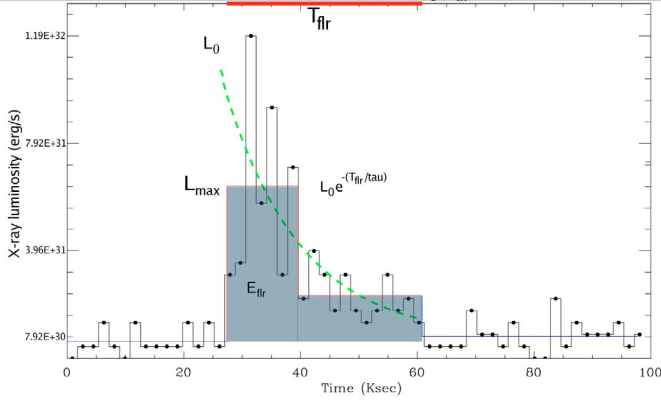


Fig. 2. We illustrate flare parameters. Observed flare correspond to source N_x 172. Values of the parameters can be followed in Table 1. Y -axis was converted from the count rate by using $CF = 7.92 \times 10^{33}$ erg/ph. The shadowed area corresponds to the flare energy. Dashed line refers to the exponential decay fit of the flare. Note: Label “tau” in the equation refers to exponential decay time τ . For flares characterized by three or more blocks, we give fitted τ_{fit} values in Table 1.

flare-specific CF s. The dependence of CF on plasma temperature is, however, expected to be small.

3.1. Flare duration and decay times

Most observed flares appear to decay exponentially. We thus approximate their light curves as $L_x(t) = L_0 e^{-t/\tau}$, where L_0 is the peak luminosity and τ the exponential decay time. The parameter τ is one of most important observationally accessible since it carries information on the physical conditions of the flaring plasma and on the geometry of its confining magnetic field (Serio et al. 1991; Reale et al. 2004).

Unfortunately, τ is not easily measured for most of our flares because the photon statistic is insufficient for a reliable exponential fit. In the exponential assumption, the *measured* energy of a flare, E_{fit} , which we estimate from the number of photons detected from the beginning of the rise phase (assumed instantaneous) to its *detected* duration, T_{fit} , can be written as

$$E_{\text{fit}} = \int_0^{T_{\text{fit}}} L_0 e^{-t/\tau} dt \quad \rightarrow \quad \frac{E_{\text{fit}}}{L_0} = \tau \left(1 - e^{-T_{\text{fit}}/\tau}\right). \quad (4)$$

The additive term $e^{-T_{\text{fit}}/\tau}$ in Eq. (4) could be understood as a correction factor of τ in a integration limited by T_{fit} . Note that the quantity $\frac{E_{\text{fit}}}{L_0}$ approaches τ for $T_{\text{fit}} \gg \tau$. Hereafter, we indicate $\frac{E_{\text{fit}}}{L_0}$ as $\tau_{E/L}$. In Fig. 2 we illustrate computed flare parameters for a typical flare.

In Fig. 3 we plot $\tau_{E/L}$ vs. the time duration of flares, t_{fit} , both estimated from the MLB analysis. We note in particular that L_0 , entering into the calculation of $\tau_{E/L}$, is approximated here with the maximum luminosity of the blocked flare light curve, L_{max} . For an impulsive rise followed by an exponential decay, this last quantity is by definition smaller than the true peak flare luminosity (i.e. $L_{\text{max}} < L_0$), but typically greater than $\sim 0.5 L_0$. The vertical error bars in Fig. 3 reflect the resulting uncertainty on $\tau_{E/L}$: $0.5 E_{\text{fit}}/L_{\text{max}} < \tau_{E/L} < E_{\text{fit}}/L_{\text{max}}$. We also plot the theoretical loci, calculated from Eq. (4), for values of τ ranging from 1 to 24 h. A comparison of these theoretical curves with the data points indicates that the observed flares span a wide range of decay times.

We now wish to test the usefulness of $\tau_{E/L}^{\text{meas}} (\equiv E_{\text{fit}}/L_{\text{max}})$ as a measure of the flare’s decay time. For this purpose we have created a large number of simulated light curves assuming the

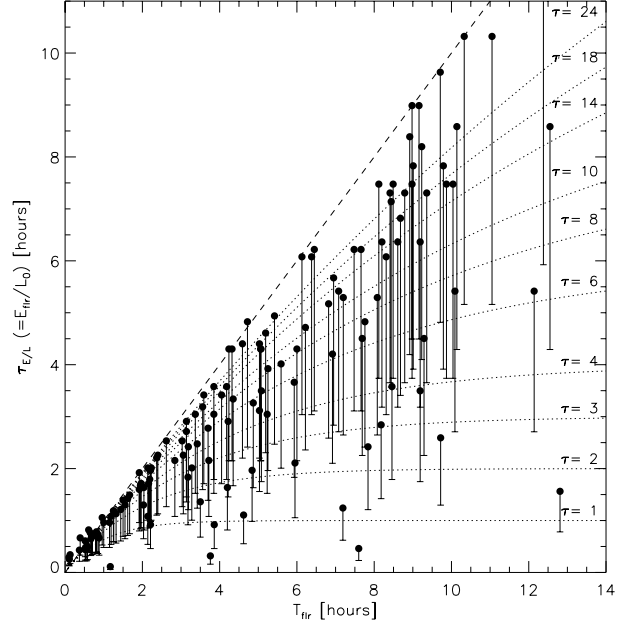


Fig. 3. $\tau_{E/L} (\equiv E_{\text{fit}}/L_0)$ vs. T_{fit} , the measured duration of flares. Filled circles indicate the observationally derived values, $E_{\text{fit}}/L_{\text{max}}$, for flares detected on Cygnus OB2 stars; vertical error-bars the allowed range of $\tau_{E/L}$ considering the observational biases on L_0 : $[0.5 E_{\text{fit}}/L_{\text{max}}, E_{\text{fit}}/L_{\text{max}}]$. Curves show the theoretical loci for exponentially decaying flares (Eq. (4)) with different decay times, τ , as labeled on the right-hand side (in hours). Note: Dashed line represents the limit case for which $T_{\text{fit}} \gg \tau$ (Eq. (4)), and thus the exponential correction factor ($e^{-T_{\text{fit}}/\tau}$) vanishes (see text).

same flare energy distribution found for Cygnus OB2 sources (see Sect. 3.2) and for a set of τ ranging from 2 to 16 h. We then applied the MLB algorithm and our flare definition to characterize flare properties in the same way as for Cygnus OB2 sources. In Fig. 4 we present histograms of $\tau_{E/L}^{\text{meas}}$ and t_{fit} resulting for simulations with τ equal to 2, 4, and 6 h. While t_{fit} appears broadly distributed, the distribution of $\tau_{E/L}^{\text{meas}}$ for simulated flare values peak at the corresponding τ input value. This suggests that $\tau_{E/L}^{\text{meas}}$ may indeed be used as an estimator of τ , with a typical, associated uncertainty $\sigma(\tau) \sim 0.3\tau$. Columns 12 and 13 of Table 1 give the values of $\tau_{E/L}^{\text{meas}}$ for all the 147 flares detected on Cygnus OB2 sources. The median $\tau_{E/L}^{\text{meas}}$ is 2.9 h and 90% of the values are in the [0.5, 9] h range. For 27 flares for which the light curve comprised more than one block we also computed τ from exponential fits to the block count rates. For these 27 sources, the median $\tau_{E/L}^{\text{meas}}$ and τ_{fit} are both 2.6 h. The distributions of $\tau_{E/L}^{\text{meas}}$ for the whole sample and for the 27 flares with exponential fits and that of τ_{fit} for the latter sample are all statistically indistinguishable from each other using two-sample Kolmogorov-Smirnov tests (all giving null probabilities $> 16\%$).

3.2. Flare energy distribution

Studies of the solar corona (i.e. Lin et al. 1984; Krucker & Benz 1998) have found solid evidence of small-scale of continuous flaring. The distribution in energy of these flares was found to follow a power law: $dN/dE \propto E^{-\alpha}$, where dN is the number of flares produced in a given time interval with a total energy (thermal and radiated) in the interval $[E, E + dE]$, and α is the index of the power-law distribution (Datlowe et al. 1974; Hudson 1991).

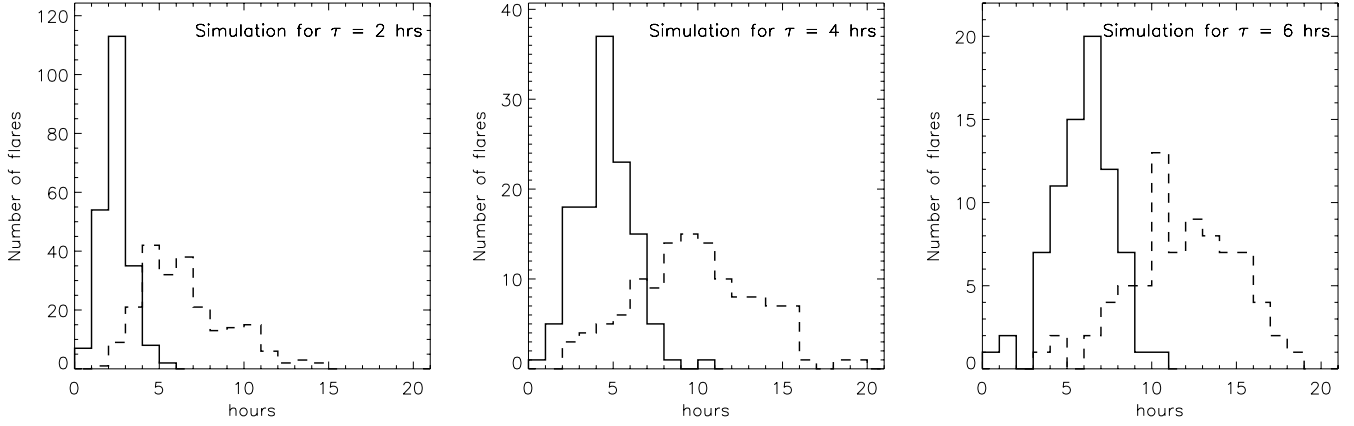


Fig. 4. Distributions of the detected flare duration t_{flr} (dashed lines) and $\tau_{E/L}^{\text{meas}}$ (solid lines) for simulated light curves constructed with flares having three different decay times τ : 2, 4, and 6 h. Note that, while the distributions of $\tau_{E/L}^{\text{meas}}$ peak at the simulation input values, t_{flr} appears broadly distributed towards higher values.

Table 1. X-ray properties of flaring sources in the Cygnus OB2 region. The complete version is available in electronic form.

N_x #	Identification 2MASS J+	Albacete Colombo et al. (2007)				KS-test $\log(P_{\text{KS}})$	MLB analysis					
		Mass	Phot.	E_x	$\log(L_x)$		R_{char}	T_{flr}	$\log(L_x^{\text{peak}})$	E_{flr}	$\tau_{E/L}^{\text{meas}}$	τ_{fit}
[1]	[2]	[3]	[4]	[5]	[6]	[7]	[8]	[9]	[10]	[11]	[12]	[13]
1	-----	---	67	3.23	30.80	-4.00	0.158	2.21	32.10	35.62	0.91	0.61
6	20322768+4113169	1.59	216	2.61	31.32	-4.00	0.958	8.18	31.98	35.99	2.87	2.64
8	20322913+4114012	0.48	33	2.62	30.26	-0.59	0.300	0.10	31.46	34.48	0.30	---
20	20323249+4113131	2.27	49	2.64	30.65	-2.69	0.145	9.01	31.01	35.46	7.70	---
28	20323592+4112505	0.94	43	2.04	30.51	-2.14	0.245	5.03	31.15	35.20	3.06	---
33	20323661+4122147	6.83	232	1.93	31.22	-4.00	0.985	12.14	31.74	36.03	5.40	4.45
37	20323751+4117121	0.18	55	2.68	30.68	-4.00	0.104	3.85	31.44	35.55	3.59	---
39	20323784+4122087	1.41	91	2.20	30.81	-1.56	0.463	9.87	31.15	35.58	7.43	---
43	20323810+4112442	1.19	53	2.74	30.64	-4.00	0.246	3.14	31.38	35.40	2.91	---
51	20323989+4113488	0.58	32	1.97	30.23	-2.91	0.127	7.08	30.90	35.19	5.46	---
52	20324009+4110346	7.97	156	2.69	31.28	-4.00	0.533	3.72	32.04	35.93	2.14	1.62
54	20324032+4122473	1.16	73	2.68	30.68	-1.06	0.570	1.44	31.50	35.14	1.21	---
57	20324063+4111113	0.54	30	2.71	31.05	-2.31	0.125	8.68	30.80	35.19	6.72	---
74	20324288+4119148	1.52	89	1.86	30.98	-4.00	0.238	8.08	31.44	35.72	5.25	2.82
81	20324342+4111034	0.60	47	2.20	30.58	-4.00	0.180	5.19	31.15	35.37	4.55	---
93	20324492+4115203	2.43	45	2.08	30.99	-1.52	0.288	6.22	30.90	35.13	4.77	---
125	20324860+4108117	1.27	121	2.23	30.95	-1.33	1.165	0.13	31.68	34.77	0.34	---
135	20325011+4116270	0.52	13	2.18	26.58	-1.48	0.056	3.76	31.74	34.80	0.32	---
145	-----	---	15	2.49	30.43	-2.98	0.046	4.05	30.85	34.94	3.43	---
146	-----	---	27	3.19	30.32	-0.59	0.175	2.21	31.07	34.92	1.94	---
159	20325218+4118160	2.83	21	1.79	30.28	-2.12	0.112	4.18	30.83	34.94	3.59	---
171	20325351+4120195	0.63	11	3.85	31.99	-0.89	0.016	4.72	30.65	34.89	4.83	---
172	20325377+4115134	2.39	219	2.42	31.41	-4.00	0.924	9.29	31.80	36.01	4.47	3.65

Note: Rows refer to a source flare. Column 1: source numbers according to Albacete Colombo et al. (2007). Column 2: name of 2MASS counterpart. Columns 3–6: source characteristics, i.e. mass of stars, “phot” the net detected photons, “ E_x ” median photon energy, and “ L_x ” X-ray luminosity [erg/s]. Column 7: logarithm of P_{KS} . Column 8 count rate of the characteristic level in units $10^{-3} [\text{s}^{-1}]$. Column 9: flare duration. Column 10: logarithm of the unabsorbed L_x at the flare peak was computed using CF. Column 11: logarithm of the flare energy (Eq. (3)). Column 12: $\tau_{L/E} = E_{\text{flr}}/L_{\text{peak}}$. Column 13: fitted decay time of the flare.

The total energy released in flares is obtained by integration:

$$E_{\text{tot}} = \int_{E_{\text{min}}}^{E_{\text{max}}} \frac{dN}{dE} E dE = k \int_{E_{\text{min}}}^{E_{\text{max}}} E^{1-\alpha} dE \approx \frac{k}{\alpha-2} E_{\text{min}}^{-(\alpha-2)}, \quad (5)$$

where E_{min} and E_{max} are the minimum and maximum allowed flare energies, respectively, k is a normalization factor and in the last passage we assumed $\alpha > 2$ and $E_{\text{max}} \gg E_{\text{min}}$. For $\alpha > 2$, the integral diverges if $E_{\text{min}} \rightarrow 0$, meaning that the energy released from micro flares ($\sim 10^{27}$ – 10^{30} erg) and nano flares ($\sim 10^{24}$ – 10^{27} erg) can contribute large amounts of energy to the total emission and eventually explain the whole coronal output (Hudson 1991). A non-zero value of E_{min} or a flattening of the

flare energy distribution at energies is required to keep the total emitted energy finite. The cumulative distribution of flare energies also follows a power law:

$$N(>E_{\text{flr}}) \propto \int_{E_{\text{flr}}}^{\infty} E^{-\alpha} dE \propto \frac{1}{\beta} E_{\text{flr}}^{-\beta} \quad \text{where } \beta = \alpha - 1. \quad (6)$$

In the following, we compare the observed cumulative distribution of flare energies with the above theoretical distribution in order to constrain the slope, α . More precisely, we consider the observed frequency of flares per source vs. the minimum flare energy, i.e. $N(>E_{\text{flr}})$ divided by the number of sources in our

sample and by the duration of the observation². Note however that, even if the simple power law model is correct, the observed distributions will flatten at low energies due to an observational bias; i.e., small events are missed by our flare detection process. Above a certain threshold energy, E_{cut} , however, our list of detected flares will probably be complete.

Other than the sensitivity bias, a simple cumulative distribution of flare energies can also be biased by the effect of overlapping flares. More specifically, the “effective” time available for the identification of flares with a given energy is reduced by the presence of larger ones, usually known as *dead-time* correction. This effect is generally small, given the low frequency of detectable flares. We correct for this bias, however in the derivation of the frequency of flares by assuming that the time available for detect flares with a given energy is reduced by the sum of the durations of more energetic flares (see, Audard et al. 2000; Stelzer et al. 2007). Figure 5 (upper panel) shows, for the Cygnus OB2 X-ray sources, the dead-time-corrected cumulative distribution of flare energies, in units of flares per source per ks.

We use the maximum likelihood method described by Crawford et al. (1970) to determine E_{cut} , i.e. the minimum energy above which the distribution is compatible with a power law, and β , the best-fit slope of the power law. The details of the statistical analysis can also be followed in Stelzer et al. (2007).

In summary, we have computed, as a function of E_{flr} , the maximum-likelihood slope, $\beta(E_{\text{flr}})$, of the cumulative distribution of flares with energies higher than E_{flr} . Alongside $\beta(E_{\text{flr}})$ we also used the Kolmogorov-Smirnov test to compute $P_{\text{KS}}(E_{\text{flr}})$, i.e. the probability that a power law with index $\beta(E_{\text{flr}})$ is indeed compatible with the observed distribution. The two functions are shown in the middle and bottom panels of Fig. 5. We chose $E_{\text{cut}} = 10^{35.1}$ erg s⁻¹ with respect to the maximum of P_{KS} (~30%). This leads in an index $\beta \approx 1.1 \pm 0.1$. Note that further increasing E_{cut} means $\beta(E_{\text{flr}})$ reaches a plateau, confirming the compatibility of the observed flare energy distribution, above E_{cut} , with a power law.

In spite of our statistical analysis, our estimation of β and E_{cut} from the observed energy flare distribution could still be biased by the limited exposure time of the observation precluding the detection of a fraction of the longer flares. This bias could mainly affect the high-energy tail of the observed flare energy distribution of Cygnus OB2 sources. Unfortunately, with our 100 ks observation, we are unable to quantify the degree of this incompleteness.

In the extraordinarily long COUP observation (~850 ks), however, this bias may be considered negligible. In Sect. 4 we present a re-analysis of the COUP data aimed at addressing this issue and at comparing the flare frequency of Cygnus OB2 stars with those of the ONC. First, however, we continue to discuss the issue of the frequency of flares.

3.3. Flare frequency

The low/intermediate-mass, X-ray-detected stellar population within the Cygnus OB2 region covered by our *Chandra* observation counts, excluding 26 OB stars, $1003 - 26 = 977$ likely members (Albacete Colombo et al. 2007). We exclude the OB stars from our statistics because

² We are using the ergodic principle here, assuming that all the sources in our sample share the same distribution of flare energies (although they do not need to share the same rate of flaring). This is necessary in order to improve the statistics, given the low frequency of flares for a single source.

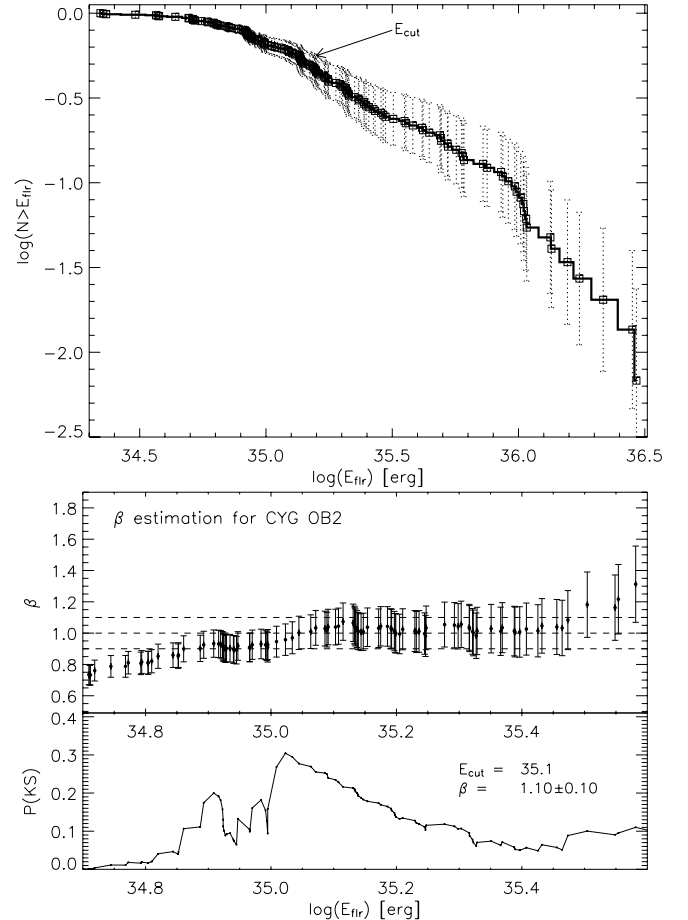


Fig. 5. *Upper panel:* frequency of flares (flares per source per ks) with energy above E_{flr} vs. E_{flr} , for Cygnus OB2 sources as derived from our 100 ks *Chandra* observation. *Middle panel:* maximum likelihood estimate of the power-law index that better approximate the distribution for flare energies above E_{flr} . Three dashed lines, from top to bottom, refer to β -values 1.1, 1.0, 0.9, respectively. *Bottom panel:* probability, according to the KS test, that a power law with best-fit index as given in the middle panel, is compatible with the observed distribution for energies above E_{cut} .

their X-ray emission is mostly unrelated to magnetic activity. Our MLB analysis detected a total of 147 flares during the 100 ks observation. The average flare frequency (f_{flr}) is thus approximately 1 flare in ~664 ks³. Considering only flares with energies above our completeness limit, $E_{\text{cut}} = 10^{35.1}$ erg, the flare frequency is reduced to $f_{\text{flr}} = 1/1320$ ks⁻¹.

The flare frequency can, however, be expected to be a function of source photon statistic, because of the combined effects of the limited sensitivity of our flare detection procedure and of the likely dependence of the flare intensity distribution on source brightness. Table 2 reports the flare frequencies calculated for a sub sample of stars with different minimum numbers of detected photons. Figure 6 also shows the full distributions of flare frequencies computed for different ranges of the source’s photon statistics. Given the bias against the detection of low-energy flares, the flare frequencies for different sub samples are more directly comparable when considering only those flares with

³ Albacete Colombo et al. (2007) indicate that up to ~80 X-ray sources may be of extragalactic nature. Taking this contamination into account, the computed flare frequency should be slightly reduced to $1/610$ ks⁻¹.

Table 2. Flare frequency for stars with different photon statistics.

Min counts	N_{src} in sample	N_{flr} in sample	f_{flr} [ks^{-1}]	
			total	comp.*
1	977	147	1/664	1/1320
10	928	143	1/644	1/1254
20	787	140	1/562	1/1063
30	630	132	1/477	1/863
40	531	114	1/465	1/748
50	434	102	1/425	1/629
80	265	74	1/358	1/416
120	134	44	1/304	1/352
150	78	35	1/222	1/252
180	47	33	1/142	1/162
250	13	12	1/108	1/108

The 26 X-ray sources identified with OB stars were excluded from the analysis of flare frequencies. Note: * indicates flare frequencies (f_{flr})[†] with energies above our completeness limit (i.e. $\log E_{\text{flr}} > 35.1$ erg).

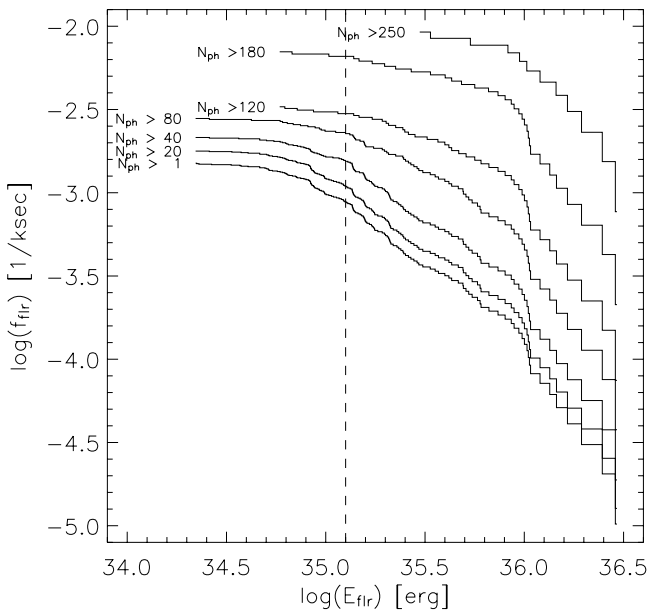


Fig. 6. Flare frequency vs. minimum energy (as in Fig. 5) for source sub samples with different minimum numbers of detected source photons (N_{ph}), as indicated beside each curve. The dashed vertical line marks our flare detection completeness limit determined in Sect. 3.2. Note: for sources with a similar N_{ph} , differences in the energy of the flare are due to their respective exponential decay times (τ).

energies above our completeness limit, $E_{\text{flr}} > E_{\text{cut}}$. This quantity is given in the last column of Table 2.

Because of the strong dependence of the observed flare frequency on the sensitivity of the observation and on the intrinsic brightness of the X-ray sources, a direct comparison with previous determinations for members of other SFRs is difficult. For example, the flare frequency ($f_{\text{flr}}^{\text{req}}$) computed for the PMS stars in the Taurus molecular clouds (TMC) by Stelzer et al. (2007) is $1/200 \text{ks}^{-1}$, much higher than our frequency for the whole Cygnus OB2 sample. The difference may largely be explained as a sensitivity effect, given that the TMC is ~ 11 times closer than Cygnus OB2 and that the observation were performed with a more sensitive instrument (*XMM-Newton* instead of *Chandra*). Note that for a “complete” sample of flares (i.e. those with $E_{\text{flr}} > 10^{35}$ erg) Stelzer et al. (2007) find $f_{\text{flr}} \sim 1/770 \text{ks}$. During the COUP observation in the ONC Wolk et al. (2005) observe 41 flares in a sample of 27 solar-mass stars

implying $f_{\text{flr}} \sim 1/650 \text{ks}^{-1}$. This figure reduces to $f_{\text{flr}} \sim 1/1150 \text{ks}^{-1}$ if we only consider flares with energies above the completeness limit estimated by Stelzer et al. (2007), i.e. $10^{35.3}$ erg.

Obviously, all these rates of flaring are not easily compared because of the different instruments, exposure times, sensitivity, and the resulting completeness limits for the observations. The availability of the COUP data gives us the opportunity to re-analyze this observation consistently with Cygnus OB2 data, so as to minimize this differences. We give details of this analysis in the next section.

4. The analysis of the COUP data

The COUP data set combines six nearly consecutive exposures of the ONC, spanning 13.2 days (1140 ks) with a total exposure time of 850 ks (9.8 days). The observation was taken with the ACIS-I camera onboard *Chandra*. A complete description of the COUP data analysis and source detection procedures can be found in Getman et al. (2005). Here we make use of the 1616 source event files.

To understand the bias introduced by the limited exposure time of our 100 ks Cygnus OB2 observation, we present the analysis of the entire 850 ks COUP observation here, as well as that of five different 100 ks segments. As anticipated in Sect. 2, the 5×100 ks segments (Seg. 1, 2, 3, 4, and 5) were defined arbitrarily, but avoided time gaps in the COUP observation. Figure 7 shows, as an example, the light curve of COUP source #1276. The horizontal segments labeled as “Seg. 1–5” indicate the time intervals for which we independently performed the flare analysis and we also indicate flares detected in the whole observation and in the 5 segments separately. Because the count rates obey Poisson statistics, the maximum amplitude of fluctuations increases with exposure time. This implies that the statistical significance of a real signal (e.g. a flare) is higher when considering a shorter time interval. The MLB algorithm, applied with the same significance threshold (99.9% in our case) to the whole observation and to the shorter segments, can therefore yield different results. In particular, as exemplified in Fig. 7, faint flares may remain undetected in the former case (seg. 3), and consecutive flares may be detected as a single event (seg. 1 and 2).

Inspection of the segmented light curves led to excluding three sources (COUP #9, #828 and #1462) from the following considerations, they lie close to the edges of the ACIS-I CCDs: because of the wobbling of *Chandra*, the light curves of these sources show high frequency variations at the wobbling period, leading to the spurious detection of a large number of flares.

Figure 8 shows the rate of flaring vs. minimum flare energy for the entire 850 ks COUP observation, for each of the five independent 100 ks COUP data segments, and for the combined flare population of the 5 segments. This curve, while maintaining the same properties with respect to observational biases, such the 5 curves for the single segments, improves the statistics and allows a more robust estimation of the mean flare frequency and of slope α .

Results of the MLB analysis for the COUP data are presented in Table 3. We report the following for each of the above data selections: N_{src} , the total number of sources that show flare activity (row 1); N_{flr} , the total number of detected flares (row 2); $1/f_{\text{flr}}$, the inverse of the single-source flare frequency, i.e. the number of flares divided by the total observing time in ks (row 3); E_{cut} , the flare energy threshold above which flare detection is considered statistically complete (row 4); $N_{\text{flr}}^{\text{comp}}$, the number of flares with energies above E_{cut} (row 5); $1/f_{\text{flr}}^{\text{comp}}$, the inverse of the

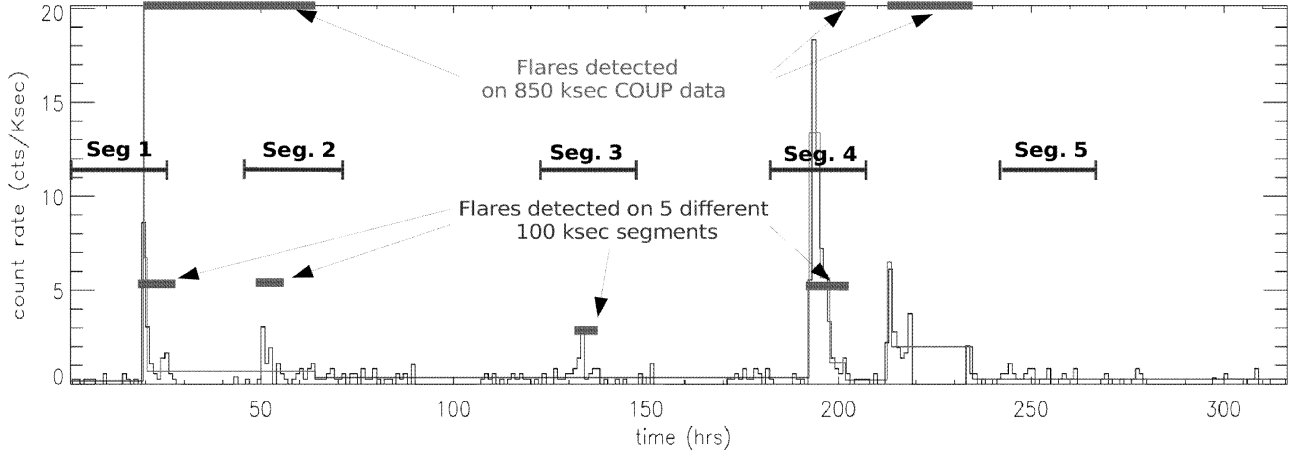


Fig. 7. Example of MLB flare detection for COUP source #1276. The result of the MLB algorithm applied to the whole observation is overlaid on the binned light curve. The three thick horizontal segments on the top indicate flares detected using this representation. The four thick segments on the bottom instead indicate the flares detected by applying the MLB algorithm to the 5 different 100 ks time intervals, with latter indicated by the thinner segments labeled “Seg. 1-5”. Note: time is given in hours from the beginning of the observation.

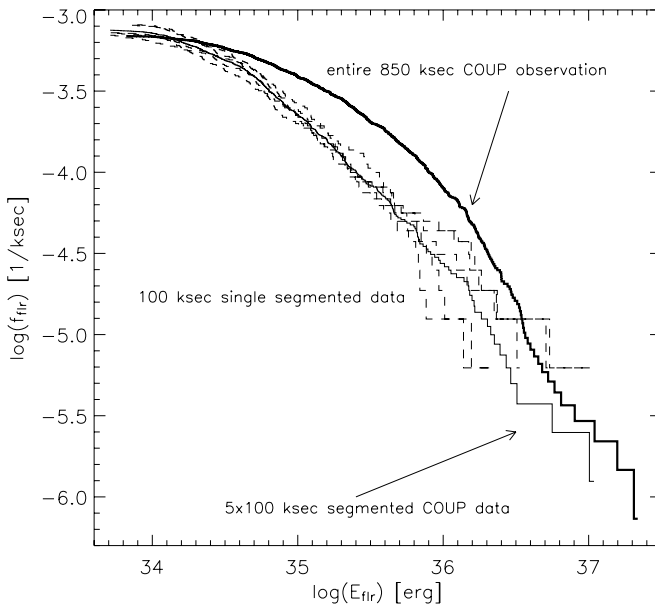


Fig. 8. Flare rate vs. minimum flare energy for the ONC X-ray sources observed by COUP, as determined from flares detected in: *i*) each of the five selected 100 ks segments of the COUP data (dashed lines), *ii*) all the five segments (thin solid line), *iii*) the whole 850 ks COUP exposure (thick solid line). Note that, as discussed in the text, more low-energy flares are detected in the 100 ks segments with respect to the whole observation, but a significant fraction of the longer/more energetic ones are missed.

flare frequency for flares with energies above E_{cut} (row 6); α , the slope of the power law that characterizes the flare energy distribution above E_{cut} (row 7); $\sigma(\alpha)$, the 1σ uncertainty on α (row 8). Columns 2 to 6 give results for the analysis of the 5×100 ks segments, Col. 7 the results for the summed 5×100 ks segments, and Col. 8 the results for the analysis of the entire 850 ks COUP observation.

For the 1616 COUP sources observed for the whole 850 ks exposure, we found that detection of flares is complete for events with $\log(E_{\text{flr}}) > 35.6$, and the cumulative distribution follows a power law with index $\alpha \sim 2.05 \pm 0.15$, in agreement with results obtained by Stelzer et al. (2007) for solar-mass stars

Table 3. Statistics of X-ray flares in the ONC.

COUP Results	5 × 100 ks segments					850 ks	
	seg. 1	seg. 2	seg. 3	seg. 4	seg. 5	Total	
N_{src}	125	111	110	111	127	584	640
N_{flr}	128	112	112	115	130	601	954
$1/f_{\text{flr}}$	1253	1432	1382	1395	1233	1334	1429
$\log E_{\text{cut}}$	34.6	34.6	34.5	34.6	34.5	34.7	35.6
$N_{\text{flr}}^{\text{comp}}$	75	63	79	62	89	313	246
$1/f_{\text{flr}}^{\text{comp}}$	2138	2546	2030	2587	1802	2562	5542
α	1.9	1.9	1.85	1.9	1.9	1.9	2.05
$\sigma(\alpha)$	0.1	0.1	0.1	0.1	0.1	0.1	0.15

Notes: $1/f_{\text{flr}}$ is in ks, E_{cut} in erg. COUP sources #9, #828, and #1462 were excluded from the analysis (see text).

(i.e. $\log(E_{\text{flr}}) > 35.3$ and $\alpha \sim 1.9 \pm 0.2$). For the 100 ks segments, we obtained $\alpha = 1.9 \pm 0.1$, which is within $\sim 1\sigma$ of the result obtained for the whole observation. Our analysis thus indicates that the slope of the flare energy distribution obtained from a 100 ks observation is statistically consistent with what is obtained from a much longer (850 ks) observation. The flare frequencies obtained from the shorter exposures are, however, significantly reduced. An inspection of the results of the flare detection processes reveals that many flares are missed in the short exposures either because the segment does not include the phases characterized by a high time derivative (the rise phase and the beginning of the decay) or, in a considerable number of cases, because the characteristic level is not observed and/or correctly determined. In some other cases, moreover, the flare is detected, but a large part of the flare falls outside the segment, thus underestimating its energy.

4.1. Comparing the ONC with the Cygnus OB2 region

Due to the small difference in age between the ONC (1 Myr) and Cygnus OB2 (2 Myr), we expect the X-ray properties of stars in the two regions to be similar. Albacete Colombo et al. (2007) indeed found similar average X-ray emission levels. For the comparison of flare properties to be meaningful, we must consider results obtained from observations of the same temporal length. For the ONC we therefore consider the results from the the analysis of the five 100 ks segments.

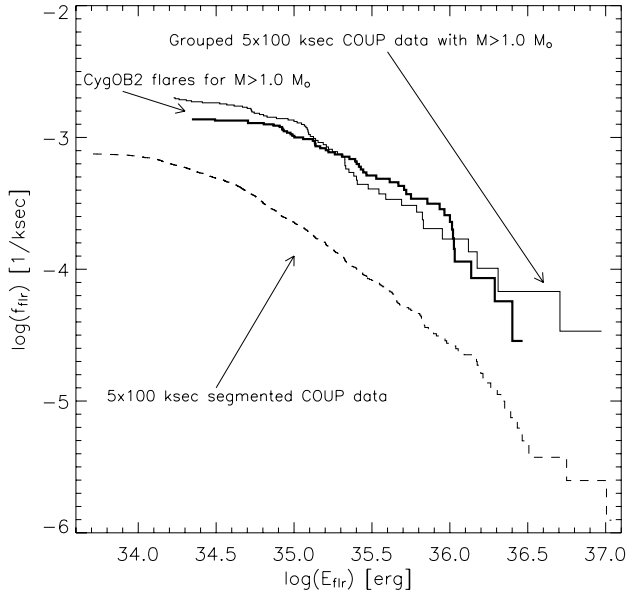


Fig. 9. Rate of flaring vs. minimum flare energy for: *i*) the Cygnus OB2 sources with mass $\geq 1 M_{\odot}$ observed during our 100 ks observation (thick solid line), *ii*) all the COUP sources observed during the five 100 ks segments of the COUP observation (dashed line), *iii*) COUP sources with mass $\geq 1 M_{\odot}$ in the five 100 ks segments (thin solid line).

Moreover, given the dependence of the X-ray luminosity on stellar mass and the relation between source luminosity and flare frequency (Sect. 3.3), a meaningful comparison between the two regions should only consider sources in a similar range of mass. We therefore computed the flare energy distribution for the 92 ONC stars in the catalog of Getman et al. (2005) with masses $\geq 1 M_{\odot}$, i.e. roughly the lower mass limit of X-ray detected Cygnus OB2 stars (Albacete Colombo et al. 2007). Figure 9 compares this distribution with that of the Cygnus OB2 sources with mass $\geq 1 M_{\odot}$, both normalized to yield the average single-source rate of flaring.

We analyzed the flare energy distribution for ONC sources with $M \geq 1 M_{\odot}$ using the same statistical procedure as described in Sect. 3. We find that, for $E_{\text{flr}} \geq 10^{35.2}$ erg, the distributions for Cygnus OB2 and ONC sources with masses higher than $1 M_{\odot}$ (see *thick* and *thin* lines in Fig. 9, respectively) are compatible with a power law with index $\beta = 1.1 \pm 0.1$ (i.e. $\alpha \sim 2.1 \pm 0.1$). We conclude that the flare statistics of the Cygnus OB2 and ONC stars are very similar.

5. Summary and conclusions

We conducted a systematic analysis of flare variability in the soft X-ray band of the young stars in the Cygnus OB2 star-forming region. For this purpose we analyzed the lightcurves of 1003 X-ray sources detected in a 100 ks *Chandra* observation. For comparison we also used the same method to analysis of lightcurves of the 1616 X-ray sources detected in the ONC with the 850 ks observation of the *Chandra* Orion Ultra-deep Project. To compare the results for the two regions, avoiding biases due to the different exposure times, we also analyzed, independently, five 100 ks long segments of the COUP observation.

Flares were detected using the MLB algorithm. A total of 147 flares were detected in the lightcurves of 143 Cygnus OB2 sources. In the ONC, 954 flares were detected on 640 sources in the analysis of the whole 850 ks observation,

while 601 flares were detected on 584 source in the analysis of the five 100 ks segments.

For each flare we estimated the emitted energy, E_{flr} , and the peak luminosity, L_{peak} . Backed by the analysis of extensive sets of simulated lightcurves, we suggest that the ratio $E_{\text{flr}}/L_{\text{peak}}$ can be considered a reasonable estimate of the flare decay-time, τ . This is particularly useful for weak flares, for which a fit to the light curve is not possible. The 147 flares in our Cygnus OB2 sample have a wide range of decay times from ~ 0.5 h to ~ 10 h, with a median of 2.9 h. For the 27 flares that are bright enough, we fitted the decay phase with an exponential finding consistent results: a median τ of 2.6 h, and a distribution compatible with that of the whole sample.

We find that Cygnus OB2 and ONC flare energy distributions display high-energy tails described by a power law ($dN/dE \propto E^{-\alpha}$). For energies below a given E_{cut} , the distributions flatten as a result of the incomplete detection of faint flares. For Cygnus OB2 sources, we obtain $E_{\text{cut}} = 10^{35.1}$ erg and $\alpha = 2.1 \pm 0.1$. This slope agrees with the range of values found in previous studies of solar and stellar flares (Güdel et al. 2003; Stelzer et al. 2007) and gives support to the micro-flare hypothesis for the explanation of the observed X-ray emission and for the heating of corona (Hudson 1991).

The average frequency of flares detected on any given Cygnus OB2 source during our 100 ks observation is $\sim 1/664 \text{ ks}^{-1}$. It reduces to $\sim 1/1320 \text{ ks}^{-1}$ when considering only flares with $E_{\text{flr}} > E_{\text{cut}} = 10^{35.1}$ erg, i.e. those for which detection is likely to be complete. It is, moreover, important to stress that our results, even for flares with energies higher than the “completeness limits”, critically depend on the flare detection method and on the duration of the X-ray observation.

We investigated this point using the 850 ks COUP data set, as well as for five distinct 100 ks segments of the same observation. The frequencies as a function of minimum flare energy derived in the two cases are significantly different: the short exposures indeed hinder the detection of long and (usually) energetic flares, often because it is not possible to correctly determine the “characteristic level”, which is instead clearly observed in the longer exposure. The “completeness limits”, E_{cut} , above which the flare energies appear to follow power law distributions, are also different for the two cases: $10^{35.6}$ and $10^{34.6}$ egrs for the 850 ks and the 100 ks observations, respectively. The slopes of the power laws, α , are however notably similar, respectively 2.05 ± 0.15 and 1.9 ± 0.1 , which are compatible with each other and with the slope of the Cygnus OB2 distribution within $\sim 1\sigma$.

For the ONC stars we considered the analysis of the 100 ks segments. To compare stars with similar intrinsic X-ray luminosities, we restricted the sample to stars with masses higher than $1 M_{\odot}$, i.e. roughly the completeness limit of our Cygnus OB2 observation. We find that the stars in the Cygnus OB2 and ONC regions have indistinguishable X-ray flare properties.

Finally, we confirm that comparison of flare frequencies is only allowed if observational limitations and data analysis are performed in a single and homogeneous way. Contrary to this result is just the determination of the slope of the power-law distribution, which is not critically influenced by the length of the observation.

Acknowledgements. J.F.A.C. acknowledges support by the Marie Curie Fellowship Contract No. MTKD-CT-2004-002769 of the project “The Influence of Stellar High Energy Radiation on Planetary Atmospheres” and the host institution INAF – Osservatorio Astronomico di Palermo. J.F.A.C. is a researcher member of the Consejo Nacional de Investigaciones Científicas y Tecnológicas (CONICET) and acknowledge support. E. F., G. M., and S. S. acknowledge

financial support from the Ministero dell'Universita' e della Ricerca and ASI/INAF Contract I/023/05/0.

References

- Albacete Colombo, J. F., Flaccomio, E., Micela, G., Sciortino, S., & Damiani, F. 2007, *A&A*, 464, 211
- Argiroffi, C., Maggio, A., & Peres, G. 2007, *A&A*, 465, L5
- Audard, M., Güdel, M., Drake, J. J., & Kashyap, V. L. 2000, *ApJ*, 541, 396
- Broos, P., Townsley, L., Getman, K., & Bauer, F. 2002, ACIS Extract, An ACIS Point Source Extraction Package, <http://www.astro.psu.edu/xray/docs/TARA/>
- Caramazza, M., Flaccomio, E., Micela, G., et al. 2007, *A&A*, 471, 645
- Crawford, D. F., Jauncey, D. L., & Murdoch, H. S. 1970, *ApJ*, 162, 405
- Datlowe, D. W., Elcan, M. J., & Hudson, H. S. 1974, *Sol. Phys.*, 39, 155
- Drake, J. J., Peres, G., Orlando, S., Laming, J. M., & Maggio, A. 2000, *ApJ*, 545, 1074
- Favata, F., & Micela, G. 2003, *Space Sci. Rev.*, 108, 577
- Favata, F., Flaccomio, E., Reale, F., et al. 2005, *ApJS*, 160, 469
- Feigelson, E. D., & Montmerle, T. 1999, *ARA&A*, 37, 363
- Flaccomio, E., Micela, G., & Sciortino, S. 2003, *A&A*, 402, 277
- Flaccomio, E., Micela, G., Sciortino, S., et al. 2005, *ApJS*, 160, 450
- Fuhrmeister, B., & Schmitt, J. H. M. M. 2003, *A&A*, 403, 247
- Getman, K. V., Flaccomio, E., Broos, P. S., et al. 2005, *ApJS*, 160, 319
- Güdel, M. 2004, *A&ARv*, 12, 71
- Güdel, M., Audard, M., Kashyap, V. L., Drake, J. J., & Guinan, E. F. 2003, *ApJ*, 582, 423
- Güdel, M., Briggs, K. R., Arzner, K., et al. 2007, *A&A*, 468, 453
- Hudson, H. S. 1991, *Sol. Phys.*, 133, 357
- Krucker, S., & Benz, A. O. 1998, *ApJ*, 501, L213
- Lin, R. P., Schwartz, R. A., Kane, S. R., Pelling, R. M., & Hurley, K. C. 1984, *ApJ*, 283, 421
- Marino, A., Micela, G., Peres, G., & Sciortino, S. 2003, *A&A*, 407, L63
- Preibisch, T., McCaughrean, M. J., Grosso, N., et al. 2005, *ApJS*, 160, 582
- Press, W. H., Teukolsky, S. A., Vetterling, W. T., & Flannery, B. P. 1992, *Numerical recipes in FORTRAN. The art of scientific computing* (Cambridge: University Press), 1992, 2nd ed.
- Reale, F., Güdel, M., Peres, G., & Audard, M. 2004, *A&A*, 416, 733
- Serio, S., Reale, F., Jakimiec, J., Sylwester, B., & Sylwester, J. 1991, *A&A*, 241, 197
- Stassun, K. G., van den Berg, M., Feigelson, E., & Flaccomio, E. 2006, *ApJ*, 649, 914
- Stelzer, B., Flaccomio, E., Montmerle, T., et al. 2005, *ApJS*, 160, 557
- Stelzer, B., Flaccomio, E., Briggs, K., et al. 2007, *A&A*, 468, 463
- Wolk, S. J., Harnden, Jr., F. R., Flaccomio, E., et al. 2005, *ApJS*, 160, 423

Online Material

Table 1. X-ray properties of flaring sources in the Cygnus OB2 region.

N_x #	Identification 2MASS J+	Albacete Colombo et al. (2007)				KS-test $\log(P_{KS})$	MLB analysis					
		Mass	Phot.	E_x	$\log(L_x)$		CR _{char}	T_{flr}	L_x^{peak}	E_{flr}	$\tau_{E/L}^{meas}$	τ_{fit}
[1]	[2]	[3]	[4]	[5]	[6]	[7]	[8]	[9]	[10]	[11]	[12]	[13]
1	-----	--	67	3.23	30.80	-4.00	0.158	2.21	32.10	35.62	0.91	0.61
6	20322768+4113169	1.59	216	2.61	31.32	-4.00	0.958	8.18	31.98	35.99	2.87	2.64
8	20322913+4114012	0.48	33	2.62	30.26	-0.59	0.300	0.10	31.46	34.48	0.30	--
20	20323249+4113131	2.27	49	2.64	30.65	-2.69	0.145	9.01	31.01	35.46	7.70	--
28	20323592+4112505	0.94	43	2.04	30.51	-2.14	0.245	5.03	31.15	35.20	3.06	--
33	20323661+4122147	6.83	232	1.93	31.22	-4.00	0.985	12.14	31.74	36.03	5.40	4.45
37	20323751+4117121	0.18	55	2.68	30.68	-4.00	0.104	3.85	31.44	35.55	3.59	--
39	20323784+4122087	1.41	91	2.20	30.81	-1.56	0.463	9.87	31.15	35.58	7.43	--
43	20323810+4112442	1.19	53	2.74	30.64	-4.00	0.246	3.14	31.38	35.40	2.91	--
51	20323989+4113488	0.58	32	1.97	30.23	-2.91	0.127	7.08	30.90	35.19	5.46	--
52	20324009+4110346	7.97	156	2.69	31.28	-4.00	0.533	3.72	32.04	35.93	2.14	1.62
54	20324032+4122473	1.16	73	2.68	30.68	-1.06	0.570	1.44	31.50	35.14	1.21	--
57	20324063+4111113	0.54	30	2.71	31.05	-2.31	0.125	8.68	30.80	35.19	6.72	--
74	20324288+4119148	1.52	89	1.86	30.98	-4.00	0.238	8.08	31.44	35.72	5.25	2.82
81	20324342+4111034	0.60	47	2.20	30.58	-4.00	0.180	5.19	31.15	35.37	4.55	--
93	20324492+4115203	2.43	45	2.08	30.99	-1.52	0.288	6.22	30.90	35.13	4.77	--
125	20324860+4108117	1.27	121	2.23	30.95	-1.33	1.165	0.13	31.68	34.77	0.34	--
135	20325011+4116270	0.52	13	2.18	26.58	-1.48	0.056	3.76	31.74	34.80	0.32	--
145	-----	--	15	2.49	30.43	-2.98	0.046	4.05	30.85	34.94	3.43	--
146	-----	--	27	3.19	30.32	-0.59	0.175	2.21	31.07	34.92	1.94	--
159	20325218+4118160	2.83	21	1.79	30.28	-2.12	0.112	4.18	30.83	34.94	3.59	--
171	20325351+4120195	0.63	11	3.85	31.99	-0.89	0.016	4.72	30.65	34.89	4.83	--
172	20325377+4115134	2.39	219	2.42	31.41	-4.00	0.924	9.29	31.80	36.01	4.47	3.65
190	20325480+4112034	1.10	64	2.37	30.64	-0.75	0.568	0.88	31.48	34.86	0.67	--
193	20325514+4113148	1.26	58	2.08	30.74	-0.59	0.426	3.70	31.13	35.13	2.80	--
195	20325525+4108321	0.93	59	2.71	30.73	-4.00	0.233	5.03	31.26	35.46	4.44	--
206	20325648+4110531	1.86	71	2.26	30.82	-1.15	0.623	0.52	31.77	34.97	0.44	--
218	-----	--	52	2.15	30.54	-3.18	0.199	1.32	31.18	34.79	1.14	--
218	-----	--	52	2.15	30.54	-3.18	0.199	2.14	31.44	35.30	1.99	--
226	20325803+4110582	1.42	70	2.73	30.80	-3.05	0.610	0.58	31.68	34.93	0.49	--
229	20325828+4112511	0.31	21	2.34	30.14	-2.72	0.075	6.82	30.77	35.04	5.18	--
234	-----	--	6	1.45	29.23	-4.00	-0.001	9.16	30.20	34.71	9.02	--
238	20325874+4112266	0.65	67	2.55	30.62	-3.71	0.470	5.59	31.07	35.23	3.97	--
239	20325883+4111095	0.66	74	2.31	30.84	-4.00	0.350	3.56	31.44	35.50	3.20	--
253	20325964+4115146	14.00	37	1.73	31.47	-0.46	0.293	2.04	31.07	34.84	1.63	--
257	-----	--	5	1.92	29.30	-0.65	0.025	1.19	30.77	34.36	1.06	--
260	20325987+4108488	1.36	289	2.93	31.53	-4.00	0.166	9.71	31.80	36.34	9.49	--
269	-----	--	16	1.91	32.42	-1.39	0.119	0.65	31.13	34.57	0.77	--
271	20330058+4118594	0.91	186	2.39	31.16	-4.00	0.769	1.55	31.52	35.19	1.30	--
271	20330058+4118594	0.91	186	2.39	31.16	-4.00	0.769	6.92	31.68	35.86	4.23	3.54
280	20330106+4117564	2.70	106	2.37	30.98	-2.23	0.750	3.42	31.48	35.43	2.46	--
283	20330119+4109182	2.51	346	2.64	31.51	-3.61	3.159	2.03	31.80	35.47	1.30	--
287	20330133+4110562	0.43	12	2.41	26.58	-1.83	0.046	5.06	30.60	34.79	4.36	--
288	-----	--	16	2.56	30.18	-4.00	0.060	2.40	31.01	34.92	2.23	--
300	20330176+4111107	0.60	270	1.70	31.10	-4.00	1.593	3.28	32.10	35.96	2.00	1.96
313	20330285+4107068	0.69	41	2.45	30.36	-2.29	0.216	8.61	30.85	35.21	6.25	--
317	-----	--	20	2.14	29.93	-1.08	0.032	12.81	31.38	35.13	1.59	2.37
320	20330356+4112539	1.06	27	3.51	30.21	-2.02	0.171	2.20	31.07	34.92	1.96	--
370	20330611+4122434	0.82	19	2.14	31.13	-0.65	0.132	0.61	31.24	34.71	0.82	--
384	20330684+4112245	0.84	36	3.19	30.84	-4.00	0.197	1.26	31.50	35.13	1.19	--
390	-----	--	26	2.55	30.31	-4.00	0.112	8.44	30.68	35.09	7.13	--
396	20330718+4115206	0.70	43	3.12	30.42	-1.84	0.184	8.20	30.94	35.30	6.41	--
397	20330736+4110014	0.58	16	2.05	30.91	-2.18	0.061	8.49	30.50	34.93	7.45	--
402	20330746+4112266	2.82	182	2.93	31.24	-4.00	0.745	14.24	31.55	35.94	6.76	5.54
404	20330747+4120324	0.18	216	2.91	31.36	-4.00	0.194	7.69	31.98	36.19	4.57	3.47
420	20330808+4111091	2.75	37	2.21	30.54	-3.65	0.177	2.23	31.35	35.21	2.03	--

Table 1. (continued)

N_x #	Identification 2MASS J+	Albacete Colombo et al. (2007)				KS-test $\log(P_{KS})$	MLB analysis					
		Mass	Phot.	E_x	$\log(L_x)$		CR _{char}	T_{flr}	L_x^{peak}	E_{flr}	$\tau_{E/L}^{\text{meas}}$	τ_{fit}
[1]	[2]	[3]	[4]	[5]	[6]	[7]	[8]	[9]	[10]	[11]	[12]	[13]
430	-----	--	20	2.43	30.58	-3.90	0.048	5.42	30.85	35.10	4.94	--
432	20330865+4115146	2.37	113	2.80	31.12	-4.00	0.529	1.92	31.85	35.69	1.92	--
438	-----	--	28	2.68	30.68	-3.83	0.099	11.05	30.60	35.17	10.49	--
439	20330892+4122276	0.99	148	2.55	31.22	-4.00	0.271	14.40	31.98	35.99	2.83	3.49
440	-----	--	21	2.81	30.28	-4.00	0.027	2.14	31.58	35.17	1.08	0.66
444	-----	--	19	2.75	30.33	-3.05	0.058	10.04	30.60	35.03	7.59	--
445	20330911+4113094	2.31	83	2.49	30.88	-4.00	0.507	9.19	31.07	35.43	6.32	--
447	-----	--	51	2.20	30.56	-4.00	0.307	8.31	30.90	35.24	6.04	--
459	20330984+4122143	0.91	40	2.47	30.45	-2.22	0.148	8.41	30.90	35.32	7.27	--
478	-----	--	32	2.49	30.43	-3.40	0.038	9.72	31.38	35.35	2.62	3.06
481	20331047+4109257	0.57	176	2.68	31.23	-4.00	1.264	7.60	32.40	35.62	0.46	--
483	20331060+4121041	1.23	48	2.58	30.79	-3.08	0.470	0.11	31.38	34.34	0.26	--
492	-----	--	30	1.82	30.67	-2.18	0.178	7.20	30.74	35.02	5.28	--
497	20331123+4108338	1.32	143	2.56	31.09	-4.00	0.114	6.13	31.68	36.02	6.11	--
501	20331148+4113481	0.74	32	2.36	30.77	-0.64	0.226	1.67	31.20	34.93	1.48	--
507	20331180+4111502	0.66	105	2.50	30.97	-4.00	0.195	3.14	30.98	34.97	2.70	--
507	20331180+4111502	0.66	105	2.50	30.97	-4.00	0.195	7.84	31.83	35.77	2.46	2.71
511	20331206+4116495	1.13	40	2.01	30.22	-1.60	0.306	3.06	31.01	34.92	2.26	--
519	-----	--	20	1.91	30.22	-0.56	0.150	1.00	31.15	34.69	0.96	--
523	-----	--	50	2.33	30.72	-1.94	0.335	7.76	30.90	35.14	4.83	--
525	20331304+4115393	1.10	33	2.24	30.77	-0.93	0.249	2.19	31.04	34.85	1.78	--
529	-----	--	25	2.12	30.30	-2.79	0.134	5.07	30.80	34.99	4.33	--
535	20331366+4120052	1.04	29	2.26	31.20	-2.49	0.141	7.66	30.74	35.09	6.15	--
556	20331442+4106320	1.08	60	2.17	30.70	-4.00	0.298	7.19	31.74	35.39	1.23	1.71
559	-----	--	108	1.95	31.26	-0.93	0.931	2.09	30.42	35.14	14.79	--
563	20331480+4114215	0.47	4	3.76	29.97	-2.17	0.018	0.79	30.94	34.37	0.74	--
569	20331513+4113106	0.82	26	4.40	30.42	-3.94	0.045	4.59	31.04	35.24	4.40	--
572	20331523+4113277	1.00	24	2.50	30.49	-1.56	0.138	3.85	30.90	34.94	3.06	--
579	20331546+4118162	1.15	94	2.24	30.88	-2.96	0.641	6.00	31.22	35.41	4.27	--
581	-----	--	50	1.28	32.19	-1.01	0.436	0.85	31.35	34.77	0.74	--
588	-----	--	26	1.95	31.37	-4.00	0.005	6.38	30.98	35.32	6.13	--
596	-----	--	327	2.55	31.60	-4.00	1.620	5.93	32.01	36.13	3.61	3.65
600	-----	--	428	1.76	31.76	-4.00	0.737	9.19	32.35	36.45	3.54	2.59
603	20331660+4112589	1.70	53	2.08	30.88	-4.00	0.276	9.36	30.90	35.32	7.37	--
606	-----	--	55	2.26	31.27	-2.75	0.438	2.16	31.20	34.99	1.72	--
612	-----	--	118	2.17	31.42	-4.00	0.340	8.98	31.35	35.78	7.62	--
612	-----	--	118	2.17	31.42	-4.00	0.340	0.53	31.58	34.82	0.48	--
616	20331744+4107242	0.52	55	2.75	30.71	-3.75	0.107	8.92	31.07	35.55	8.27	--
618	20331754+4120416	0.67	41	2.66	30.47	-4.00	0.201	0.81	31.80	35.25	0.77	--
631	20331817+4111010	0.55	9	2.01	31.51	-1.46	0.018	8.12	30.38	34.81	7.54	--
635	-----	--	33	2.26	30.19	-1.47	0.214	1.97	31.20	34.99	1.73	--
651	-----	--	15	2.21	31.05	-0.71	0.076	2.37	30.90	34.80	2.23	--
652	20331924+4117567	1.74	212	2.68	31.41	-4.00	0.816	8.79	31.60	36.02	7.37	--
662	20331962+4118043	0.81	19	2.28	31.60	-1.41	0.124	1.92	30.98	34.74	1.62	--
664	20331968+4121025	1.07	33	2.31	30.53	-4.00	0.173	3.37	31.07	35.11	3.05	--
673	20332028+4116478	0.57	7	2.22	29.90	-1.20	0.010	8.98	30.20	34.71	9.04	--
676	20332044+4120334	4.07	186	1.51	31.49	-4.00	1.230	3.86	32.20	35.72	0.92	0.83
687	-----	--	91	2.68	30.87	-4.00	0.304	10.14	31.20	35.69	8.57	--
690	20332112+4117570	2.06	21	2.90	30.56	-3.07	0.097	3.59	30.90	34.99	3.47	--
694	20332126+4118395	4.07	46	2.20	30.80	-4.00	0.297	1.50	31.44	35.14	1.37	--
697	20332161+4112296	0.97	14	1.95	26.58	-0.53	0.101	0.96	30.98	34.56	1.07	--
709	-----	--	28	2.77	31.25	-2.86	0.090	4.24	31.01	35.20	4.27	--
710	20332206+4110044	0.63	81	2.31	31.01	-2.48	0.652	2.84	31.26	35.15	2.17	--
712	20332224+4117446	4.07	209	2.26	31.34	-3.43	1.567	3.19	31.71	35.65	2.39	--
716	20332247+4117368	0.63	10	1.82	26.58	-1.16	0.040	4.32	30.50	34.69	4.34	--
740	-----	--	28	3.15	30.32	-4.00	0.022	6.45	30.98	35.33	6.21	--
743	20332440+4120330	1.13	417	2.64	31.63	-4.00	0.483	12.55	31.98	36.47	8.56	12.13
746	20332453+4115339	2.77	92	2.39	31.08	-4.00	0.697	4.87	31.22	35.29	3.27	--

Table 1. (continued)

N_x #	Identification 2MASS J+	Albacete Colombo et al. (2007)				KS-test	MLB analysis					
		Mass	Phot.	E_x	$\log(L_x)$	$\log(P_{KS})$	CR_{char}	T_{flr}	L_x^{peak}	E_{flr}	$\tau_{E/L}^{meas}$	τ_{fit}
[1]	[2]	[3]	[4]	[5]	[6]	[7]	[8]	[9]	[10]	[11]	[12]	[13]
750	20332464+4110596	0.82	102	2.11	30.88	-4.00	0.413	6.95	31.38	35.69	5.77	--
751	20332481+4122235	1.28	50	2.15	30.50	-2.42	0.355	5.08	31.01	35.11	3.46	--
757	20332511+4107248	0.85	17	3.36	30.05	-0.60	0.026	9.23	30.60	35.07	8.27	--
775	-----	--	29	2.74	30.34	-3.07	0.078	10.33	30.68	35.25	10.33	--
789	20332742+4116263	0.51	14	2.14	29.87	-4.00	0.027	2.62	31.01	34.97	2.50	--
796	20332845+4119373	2.48	370	2.47	31.55	-4.00	1.544	8.46	32.13	36.24	3.60	1.31
797	20332851+4119152	1.39	38	2.04	30.40	-3.21	0.170	4.84	31.38	35.23	1.99	1.38
798	20332853+4107172	1.24	139	2.26	31.02	-4.00	1.125	1.62	31.68	35.39	1.43	--
818	20333104+4120258	1.46	168	2.33	31.14	-4.00	0.338	10.09	31.74	36.03	5.37	3.77
825	20333137+4109123	1.37	19	1.96	31.39	-1.25	0.140	0.70	31.24	34.64	0.70	--
826	20333137+4109123	1.37	19	1.96	31.38	-1.25	0.141	0.70	31.24	34.64	0.70	--
834	20333215+4118023	0.43	173	2.66	31.13	-4.00	0.036	12.38	31.50	36.13	11.84	--
841	-----	--	15	2.26	30.37	-0.80	0.046	9.79	30.50	34.95	7.76	--
857	20333478+4120502	0.52	113	2.20	31.14	-2.21	0.920	5.23	31.24	35.28	3.01	--
860	20333481+4107473	0.84	27	2.20	30.14	-1.10	0.196	1.95	31.07	34.85	1.66	--
865	20333535+4118221	0.74	25	2.90	30.33	-0.45	0.191	0.52	31.38	34.72	0.61	--
872	20333585+4106506	0.96	192	2.78	31.22	-4.00	0.998	4.35	31.80	35.88	3.29	--
877	20333640+4118189	0.94	34	2.99	30.63	-4.00	0.201	3.03	31.10	35.06	2.54	--
896	20333902+4108340	2.31	102	2.15	30.89	-0.71	0.960	0.56	31.68	34.89	0.46	--
904	-----	--	19	2.08	30.10	-0.10	0.148	0.39	31.20	34.58	0.66	--
911	-----	--	71	2.42	30.71	-4.00	-0.003	4.62	32.15	35.75	1.10	0.76
912	20334092+4109362	0.72	20	1.66	30.94	-1.46	0.107	1.17	32.30	34.91	0.11	--
914	-----	--	160	1.93	31.11	-2.53	1.372	3.18	31.50	35.32	1.82	--
919	20334128+4107342	1.42	29	1.29	30.26	-0.65	0.095	7.48	30.85	35.20	6.15	--
925	-----	--	44	1.63	30.65	-2.25	0.170	3.50	31.68	35.37	1.36	0.74
933	-----	--	17	2.23	30.07	-1.24	0.081	0.37	31.74	34.93	0.43	--
934	20334329+4110343	1.61	53	2.31	30.70	-1.30	0.414	1.25	31.38	35.01	1.19	--
945	20334461+4109067	2.09	125	2.34	31.02	-4.00	0.519	5.95	31.90	35.78	2.11	1.59
952	-----	--	29	2.63	30.39	-4.00	0.030	4.20	31.56	35.33	1.62	0.96
968	20334710+4120061	0.65	64	2.08	30.71	-2.01	0.482	4.22	31.13	35.15	2.89	--
974	-----	--	48	2.17	30.44	-1.46	0.340	5.25	30.94	35.09	3.93	--
992	20335310+4111193	2.57	64	1.03	30.41	-0.52	0.535	1.15	31.44	34.98	0.97	--
995	20335426+4113397	1.32	19	1.69	29.95	-1.41	0.094	0.67	31.55	34.92	0.65	--